

WinAlign® HD Alignment Systems

Wheel Alignment for Heavy-Duty Trucks



HUNTER
Engineering Company

WinAlign® HD Alignment Systems

Hunter Alignment Systems Make Truck and Bus Alignment Service Fast, Simple and Profitable

The Hunter WT Series Heavy-Duty Alignment Systems utilize a powerful computer, Microsoft® Windows® Vista and exclusive WinAlign® HD software to deliver alignment features specifically for heavy-duty truck, trailer and bus applications.

✓ **Widest Scope of Application**

Supports more than 60 heavy-duty axle configurations including dozens of truck/trailer, bus and dolly manufacturer configurations. After selecting a configuration, step-by-step instructions for sensor placement, measurement and adjustment are provided on-screen.

✓ **Heavy-Duty Vehicle Specifications Database**

WinAlign HD software includes a complete specification database as supplied by major heavy-duty vehicle manufacturers.

✓ **Sensors Measure Wheelbases Up to 600 Inches on Trailers, 500 Inches on Trucks!**

Wireless / Cordless Alignment “No Strings Attached!”

✓ **No Toe Lines or “Strings”**

DSP506T Sensors electronically measure camber, caster, S.A.I., thrust angle, scrub angle and front and rear toe using fewer electronic components and circuits than previous models.

✓ **Cordless Sensors (Optional)**

High-Frequency Spread-Spectrum transmitters in sensors send data to the console. Cables are no longer necessary between the sensors and console.



Hunter WT243 console shown with optional DSP506TXF Sensors.



Optional cordless sensors are faster to set up and easier to use.

WinAlign® HD Alignment Sensors

DSP506T Alignment Sensors

Hunter DSP506T alignment sensors use a Digital Signal Processor to process data at the sensor, speeding the display of alignment information to the console.

Rugged Sensor Design

- ✓ Integrated electronic components enhance reliability.
- ✓ Hard shell cover is made of the same bulletproof material used in fighter jet canopies.
- ✓ Impact-prone areas are protected by integrated bumpers.

Self-Centering Adaptors

- ✓ Self-centering adaptors are light, rigid and offer high versatility for trucks and buses with low-hanging bumpers or air dams. Fits wheels 15 to 28 inches in diameter. Optional Hub Center Adaptors are available for specialty and hard-to-mount wheels.



175-284-1 Optional Hub Center Adaptor for mounting sensor to hub center of front rims (two required).



DSP506TXF shown with standard self-centering wheel adaptor.

No Cables Between Sensors and Console

- ✓ HFSS transmitter in each sensor sends data to the console. Signal is virtually uninterrupted even by solid objects.
- ✓ Low-cost rechargeable batteries provide a full day of continuous operation and can be "hot-swapped" without interrupting the alignment job. Docking stations* recharge sensors between jobs.

No Toe Lines or "Strings" Between Sensors

- ✓ Optical infrared emitter/CCDs read cross-toe, front-to-rear toe and wheelbase/trackwidth.
- ✓ Solid state digital inclination transducers measure caster, camber and S.A.I.



Optional Trailer Alignment Gauge Tool (shown in use with optional DSP506TXF Sensors) mounts sensors to the trailer kingpin. Trailer axles are adjusted to centerline.

WinAlign® HD Alignment Software

WinAlign HD Software Simplifies Heavy-Duty Alignment

Greatly simplifies process of servicing Ford F-150 – 450s!



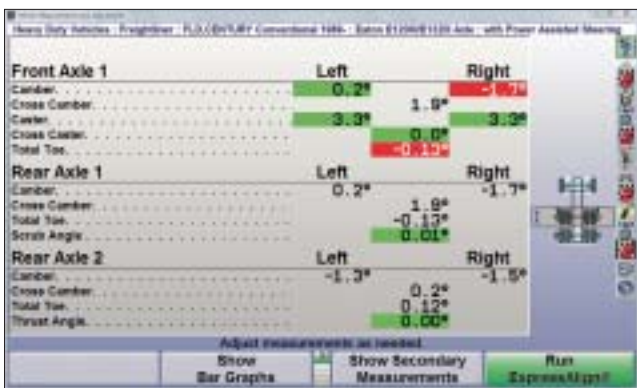
Bushing adjustment display shows the required bushing and positioning that's necessary to make desired change in caster and camber on twin I-beam and other trucks.

Vehicle Specification Database

Select the vehicle type from the on-screen list and the aligner provides the O.E.M. alignment specifications. WinAlign HD software compares the vehicle's current alignment measurements with the specifications and then shows the technician the adjustments needed to bring the vehicle into alignment.

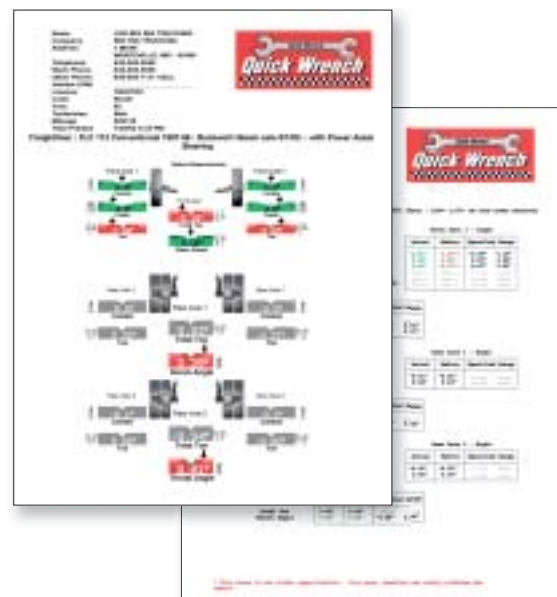
Automatic Bushing Calculator® Feature

- ✓ There are over 10 million light-trucks with twin I-beam or solid axle suspensions, that use special bushings to adjust camber and caster. ABC cuts adjustment time in half for 20% of these vehicles!
- ✓ The display prompts the technician to enter data for the current bushing, including size, shape and position of the bushing.



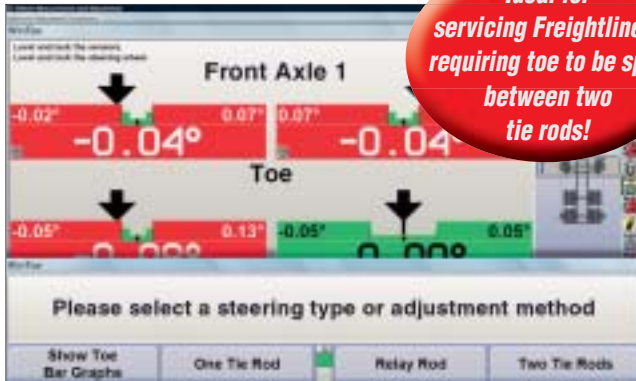
Color Measurement Displays

The aligner displays color-coded camber, toe and thrust angle measurements after compensation. Caster, S.A.I. and I.A. are displayed following caster steer. Green means the adjustment is within O.E.M. specifications; yellow means it is marginally within; and red means it is out of alignment.



Before and after alignment results can be printed in color.

WinAlign HD Software Speeds Alignment Adjustments



Ideal for servicing Freightliners requiring toe to be split between two tie rods!

WinToe displays tie rod adjustment (not toe adjustment) required to set front toe to spec and center the steering wheel.

WinToe® Alignment Adjustment System

- ✓ Many new Freightliners feature rack and pinion steering, which requires the adjustment of two tie rods. WinToe software simplifies this adjustment procedure to eliminate repeated adjustments and virtually ensure a centered steering wheel on the first try.
- ✓ Eliminates the need to readjust toe on one side because of movement on the opposite side. Works with all vehicles on the road today, from cars to Freightliners.

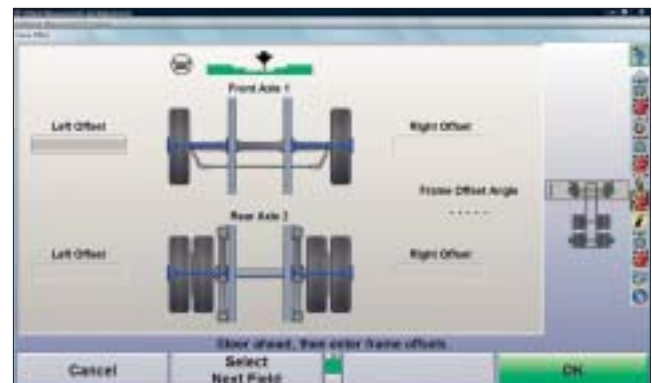
Additional Power Features for Light-Vehicle Work Include:

- CAMM® Feature
- Tools and Kits Database
- Digital Photos/Videos†
- ExpressAlign® Procedure
- Shim Select® II Feature
- Work Management Features



Easy-to-Read Adjustment Screens

WinAlign HD automatically calculates alignment adjustments for the technician. As the adjustment is made, the arrow moves across the bar graph target. When the adjustment comes within specification, the bar graph changes from red to green.



Frame Offset Angle Display

Exclusive Windows-based WinAlign software measures frame offset angle and calculates adjustments to frame centerline, if a frame reference alignment is needed.



Accurate to 600 inches on trailers, WinAlign HD supports the widest range of axle configurations using wireless/cordless sensors. Software includes selections for trucks, buses, trailers and dollies.

† Requires Digital Photo/Video options. Features are standard on WT200 Systems and optional on WT100 Systems.

WT Series Console Configurations

WT100 Series Consoles



WT142

Large standard cabinet with 19" LCD monitor. Approximately measures 70"H x 35"W x 29"D (with monitor).



WT141

Large standard cabinet with 17" LCD monitor. Approximately measures 69"H x 35"W x 29"D (with monitor).



WT132

Compact standard cabinet with 19" LCD monitor. Approximately measures 70"H x 26"W x 23"D (with monitor).



WT131

Compact standard cabinet with 17" LCD monitor. Approximately measures 69"H x 26"W x 23"D (with monitor).



WT122

Wall-mount cabinet with 19" LCD monitor. Approximately measures 42-1/2"H x 30-1/2"W x 24"D (with monitor).

Optional Remote Indicators Speed Alignment Service

Hunter Remote Indicators are designed to provide the operator with complete control while making adjustments to the vehicle.



**30-418-1 Plus
Cordless Remote
Indicator shown.**

- ✓ **30-418-1 Plus Cordless[†] Remote Indicator**
Hunter Plus Remote Indicator lets you refine your alignment service by measuring tire temperature and frame angle. Also allows entry of tire pressure, tread depth and ride height values.
- ✓ **30-421-1 Icon Cordless[†] Remote Indicator**
Includes hanger kit with remote hanger recharge and 30-foot cable.
- ✓ **30-419-1 Icon Remote Indicator**
Includes hanger kit and 30-foot cable.

[†] Cordless communication requires 20-2072-1 XF Pod.

WT200 Series Consoles



WT245

Large premium cabinet with 32" widescreen LCD monitor. Approximately measures 72"H X 35"W X 29"D (with monitor).



WT244

Large premium cabinet with 26" widescreen LCD monitor. Approximately measures 71"H X 35"W X 29"D (with monitor).



WT243

Large premium cabinet with 20" widescreen LCD monitor. Approximately measures 70"H X 35"W X 29"D (with monitor).



WT234

Compact premium cabinet with 26" widescreen LCD monitor. Approximately measures 71"H X 26"W X 23"D (with monitor).



WT233

Compact premium cabinet with 20" widescreen LCD monitor. Approximately measures 71"H X 26"W X 23"D (with monitor).



WT223

Wall-mount cabinet with 20" widescreen LCD monitor. Approximately measures 42-1/2"H X 30-1/2"W X 24"D (with monitor).

WT200 Cabinet Storage Features



The left-side drawers feature ample room for alignment tool storage.



The pull-out printer tray / drawer provides convenient printer access.



The right-side door conceals the CPU and an additional storage drawer.

WT Series Specifications

WT100 Series

- Intel Pentium Dual-Core processor – 1.8 GHz (or greater)
- 1 GB RAM (DDR2)
- 80 GB SATA hard drive (or greater)
- DVD/CD-RW drive
- USB 2.0 (Two front-side ports)
- Windows Vista - Basic
- Certified iShop compliant
- Certified ASANET compliant
- WinAlign HD software
- WinAlign software††
- 2 years of free VID updates
- 2 years WebSpecs database free subscription†

Standard Accessories (when ordering console)

- HP Color printer
- Keyboard and mouse
- Wireless remote control
- Steering wheel holder
- Brake pedal depressor
- HD turning angle gauges

Power Requirements

115V, 1-ph, 50/60 Hz

Optional Accessories

Memory Upgrade kit (1 GB)	20-2211-1
Adaptor – Rim Stud Extension Kit	20-823-1
Calibration fixture	221-652-1-T
HD frame offset tool	221-646-1
Equipment cover	69-1025-2
Trailer gauge tool (new style)	221-660-1
Trailer Dolly Alignment Kit	20-1473-1
Hub center adaptor (two required)	175-284-1
Plus Cordless Remote Indicator	30-418-1
Icon Remote Indicator	30-419-1
Icon Cordless Remote Indicator	30-421-1

Because of continuing technological advancements, specifications, models and options are subject to change without notice.

† Features of Hunter Online. The shop owner must supply their own Internet Service Provider (ISP).

†† WinAlign alignment software for use with cars and light-trucks. Car alignment sensors required (e.g., DSP506XF).

AlignGuide, Automatic Bushing Calculator, CAMM, ExpressAlign, Shim-Select, ShopResults.Net, WebSpecs, WinAlign and WinToe are registered trademarks of Hunter Engineering Company.

WT200 Series

- Intel Core 2 Duo processor – 2.6 GHz (or greater)
- 2 GB RAM (DDR2)
- 80 GB SATA hard drive (or greater)
- DVD/CD-RW drive
- USB 2.0 (Two front-side ports)
- Windows Vista - Business
- Network module
- Wireless network module
- Power line filter
- Certified iShop compliant
- Certified ASANET compliant
- WinAlign HD software
- WinAlign software††
- 2 years of free VID updates
- 2 years WebSpecs database free subscription†
- 1 year UndercarInfo.net subscription†
- 1 year ShopResults.net service subscription†
- Digital Photo
- Digital Video
- AlignGuide training
- WinAlign Tuner application

Alignment Sensors

DSP506T	4 optical sensors with self-centering wheel adaptors
DSP506TXF	4 cordless optical sensors, self-centering wheel adaptors and tire diameter measuring tool

For use with car and light-truck applications:

Due to variances in wheel sizes and wheel assemblies, different sensors may be required for aligning automobiles and light-trucks.

All current automobile sensor combinations may be used. However, an auxiliary power supply may be required to operate and/or charge additional sets of sensors.

HUNTER
Engineering Company

www.Hunter.com

Form 995-T, 03/09
Supersedes 995-T, 06/08